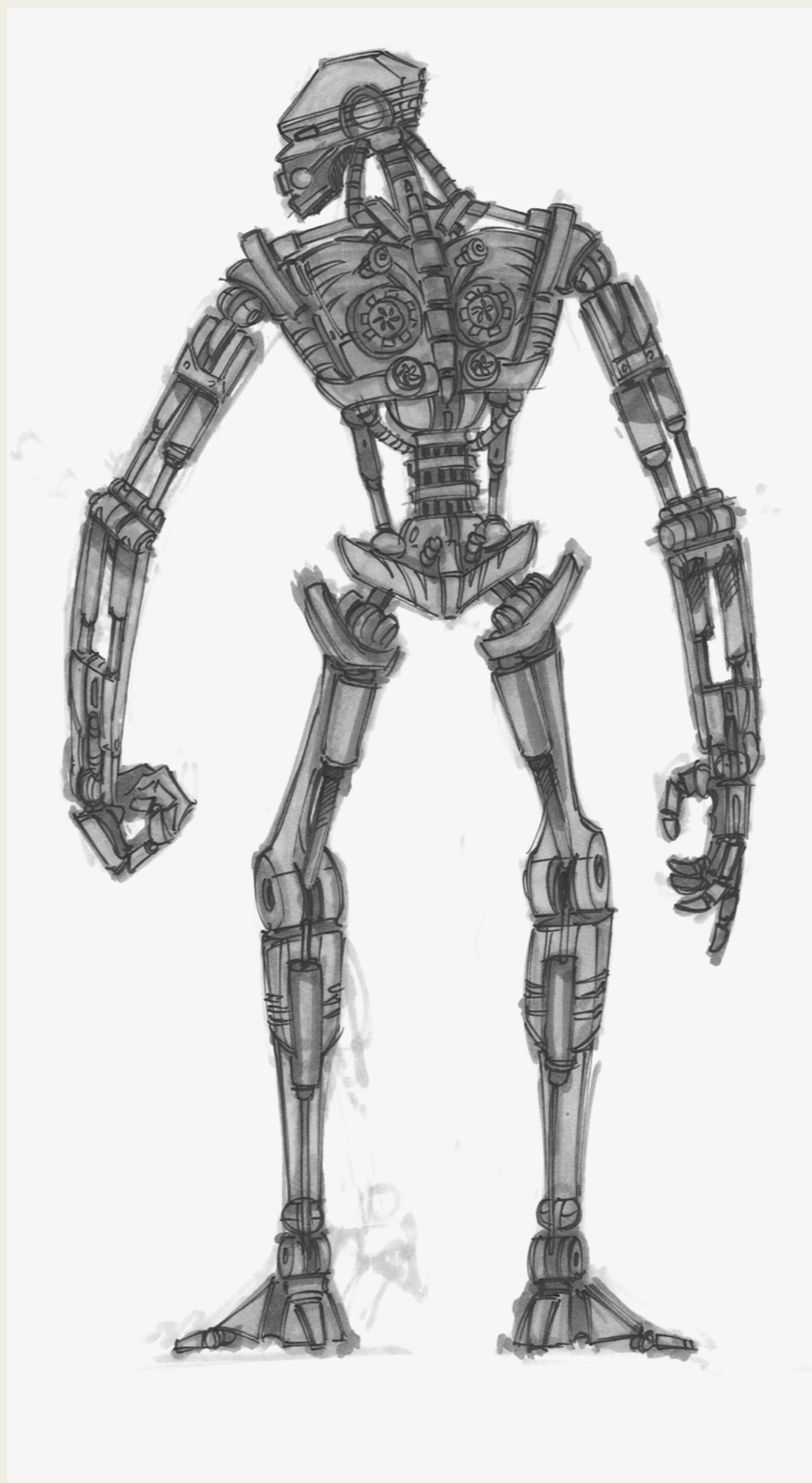
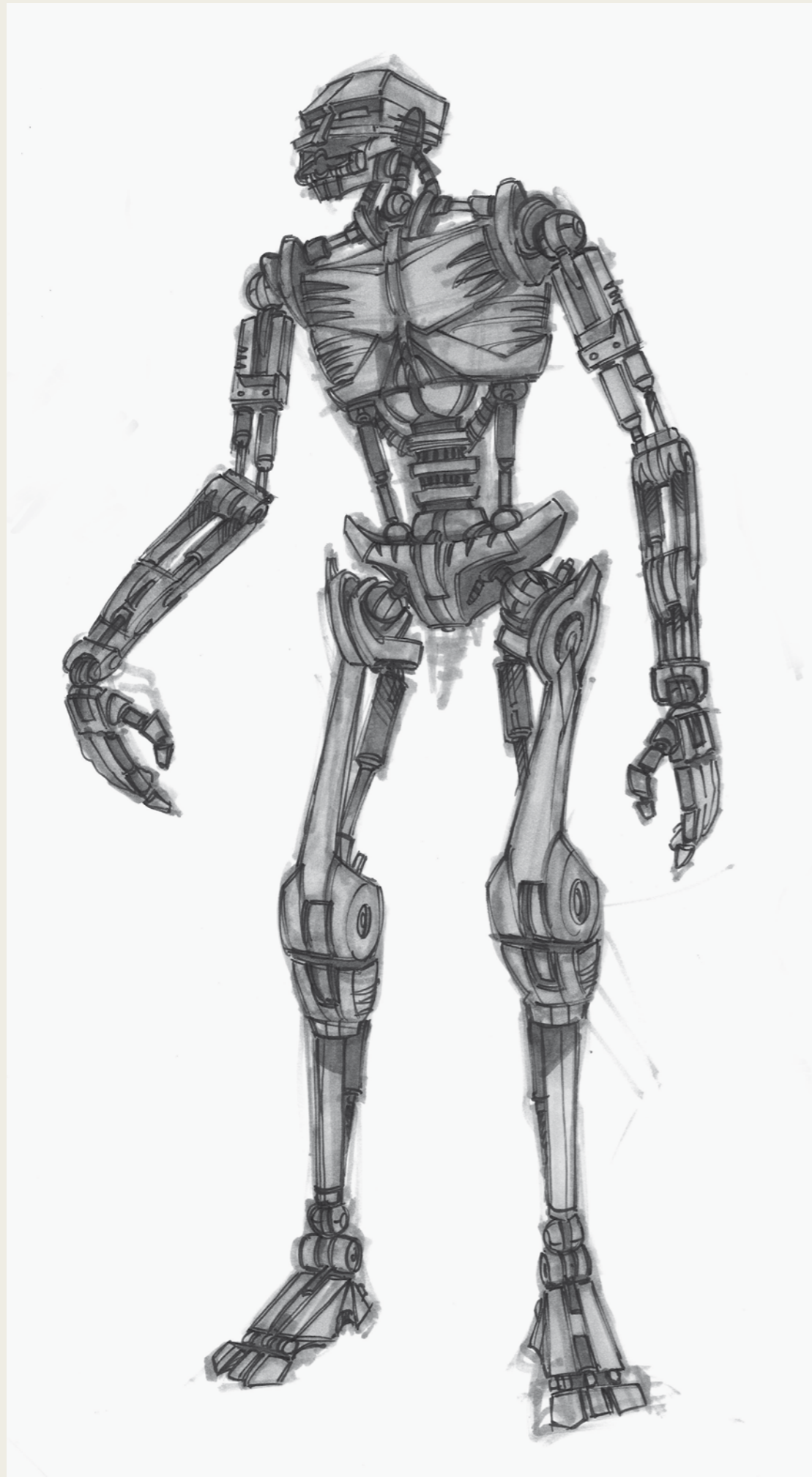


BIONICLE®

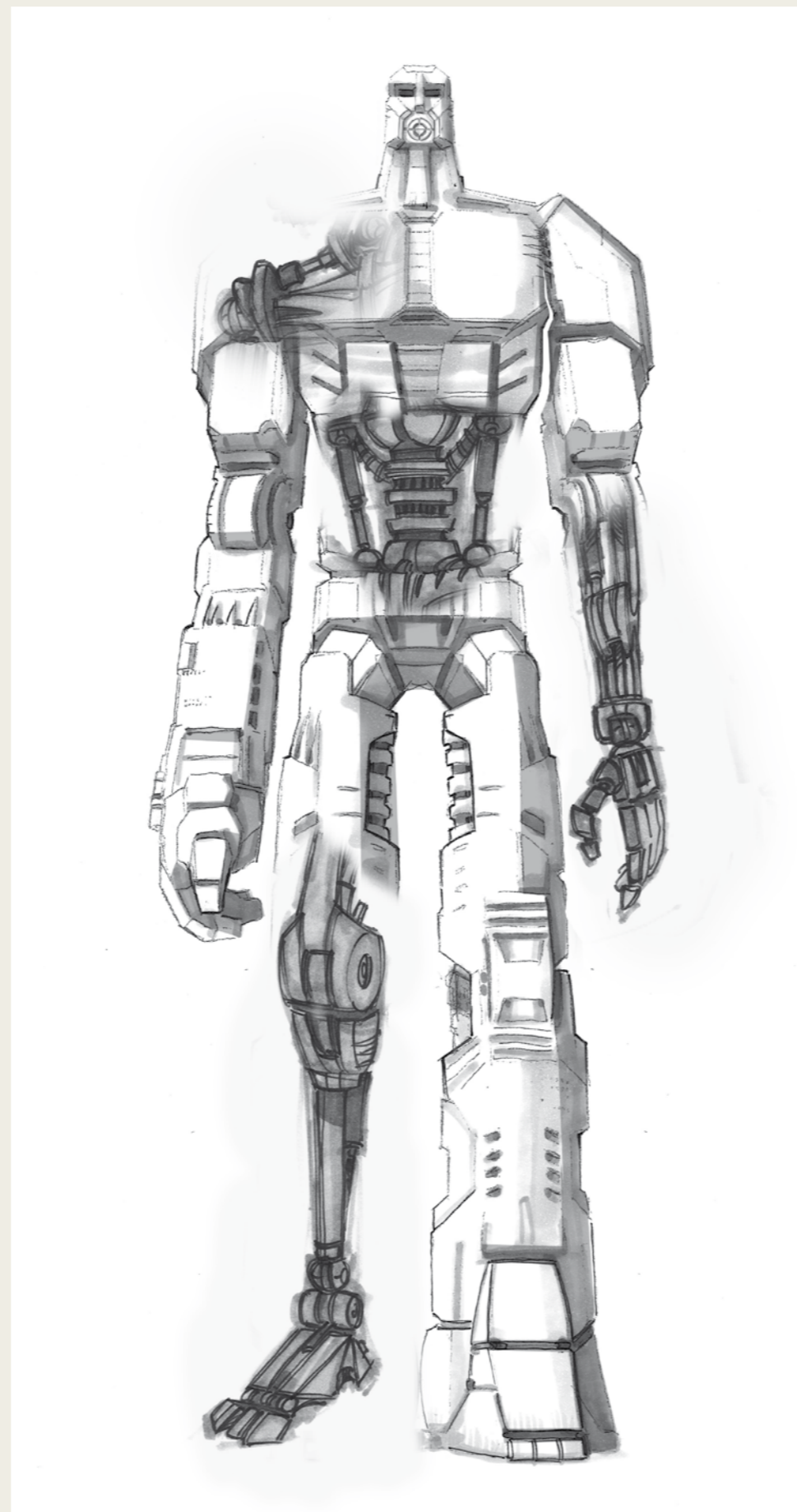
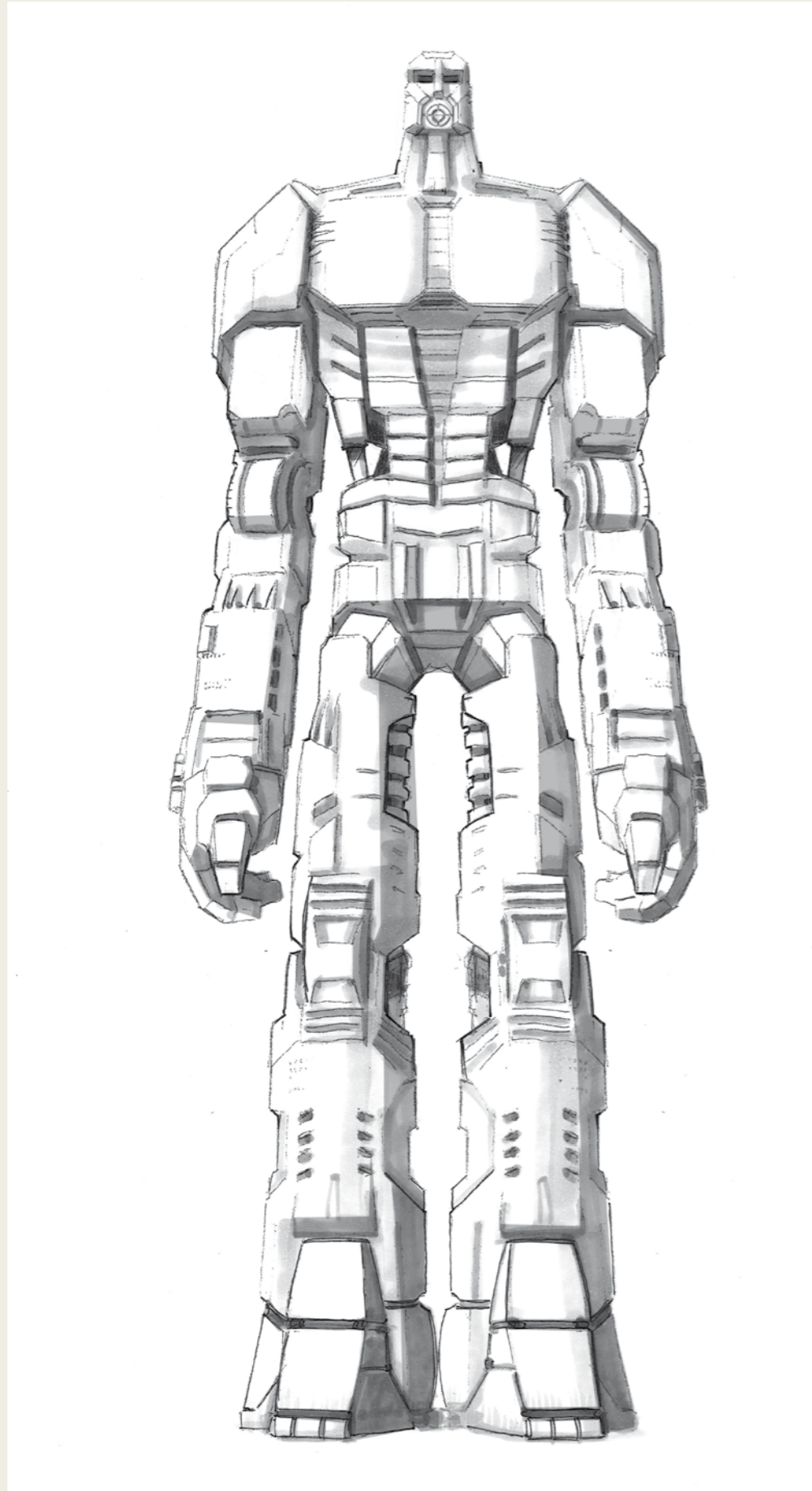
The Giant - Bara Nui



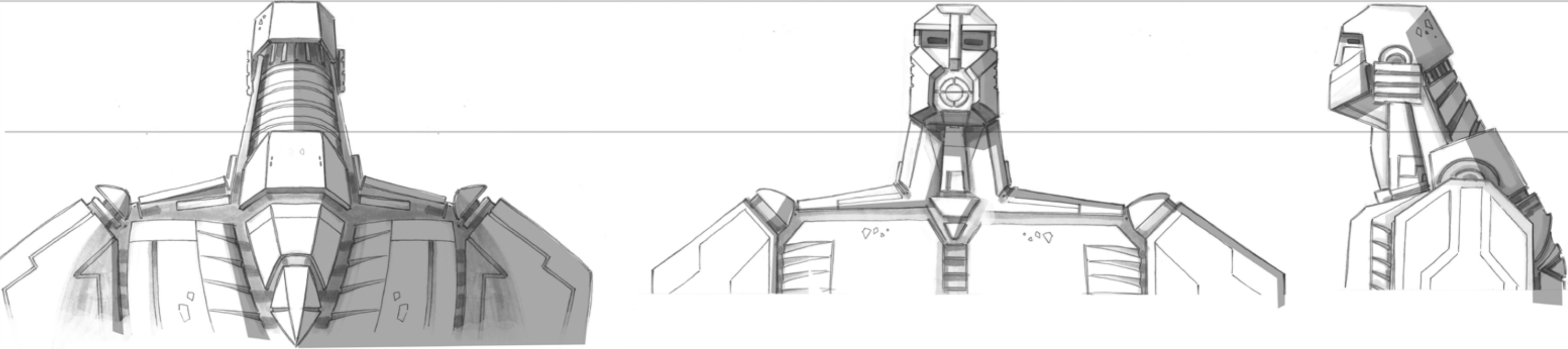
Giant Robot Skeleton



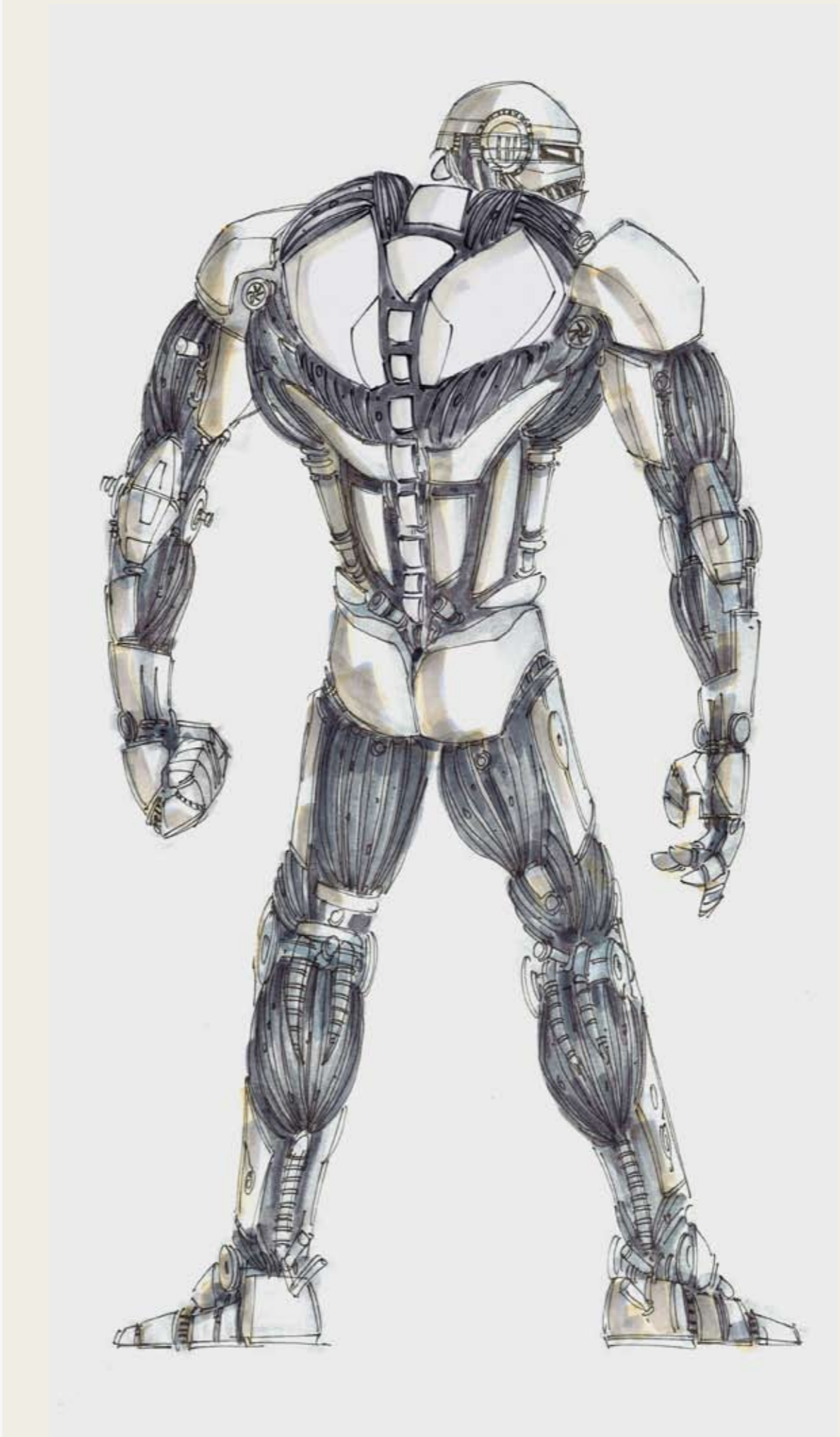
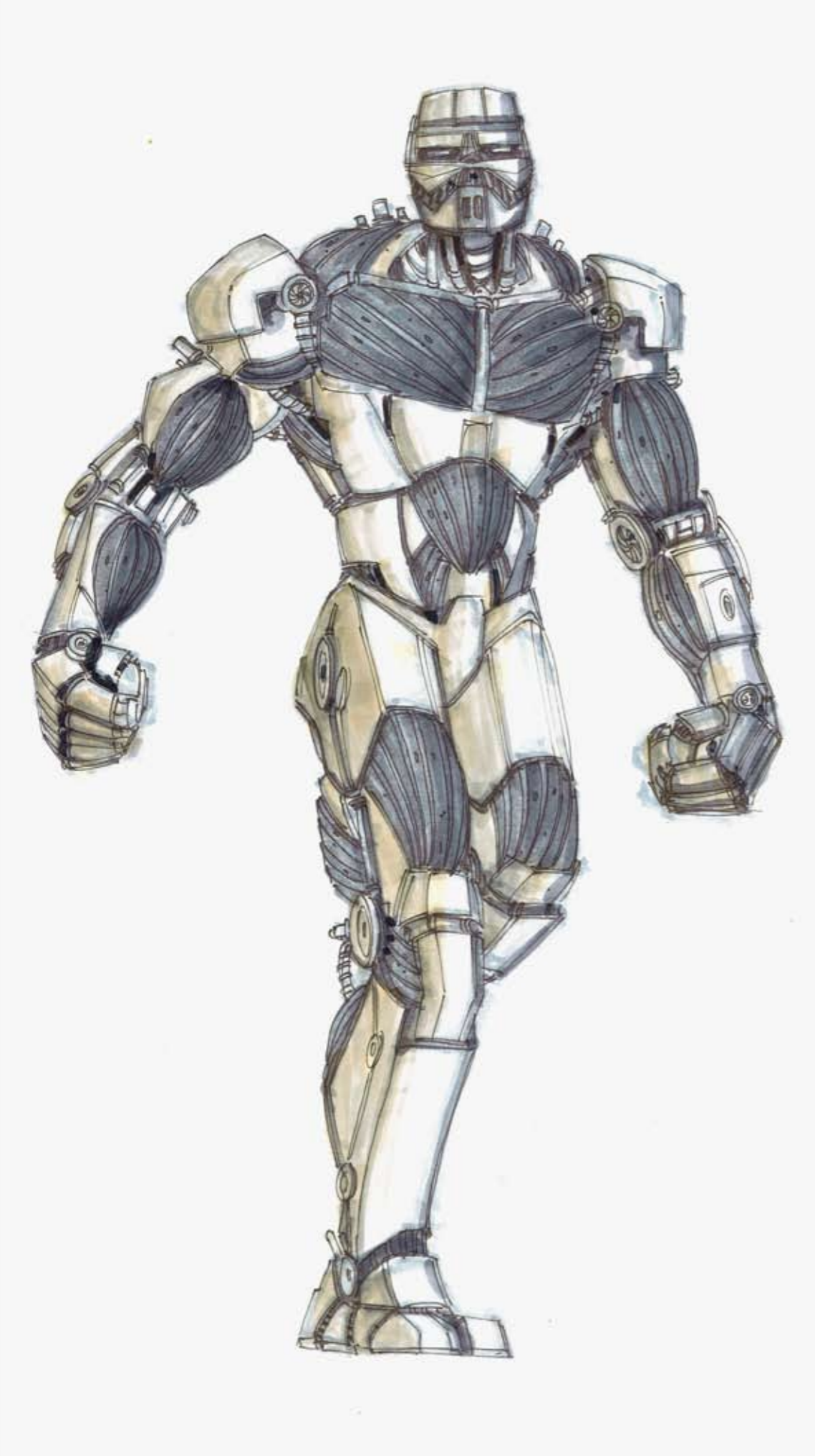
Giant Robot Inside and outside

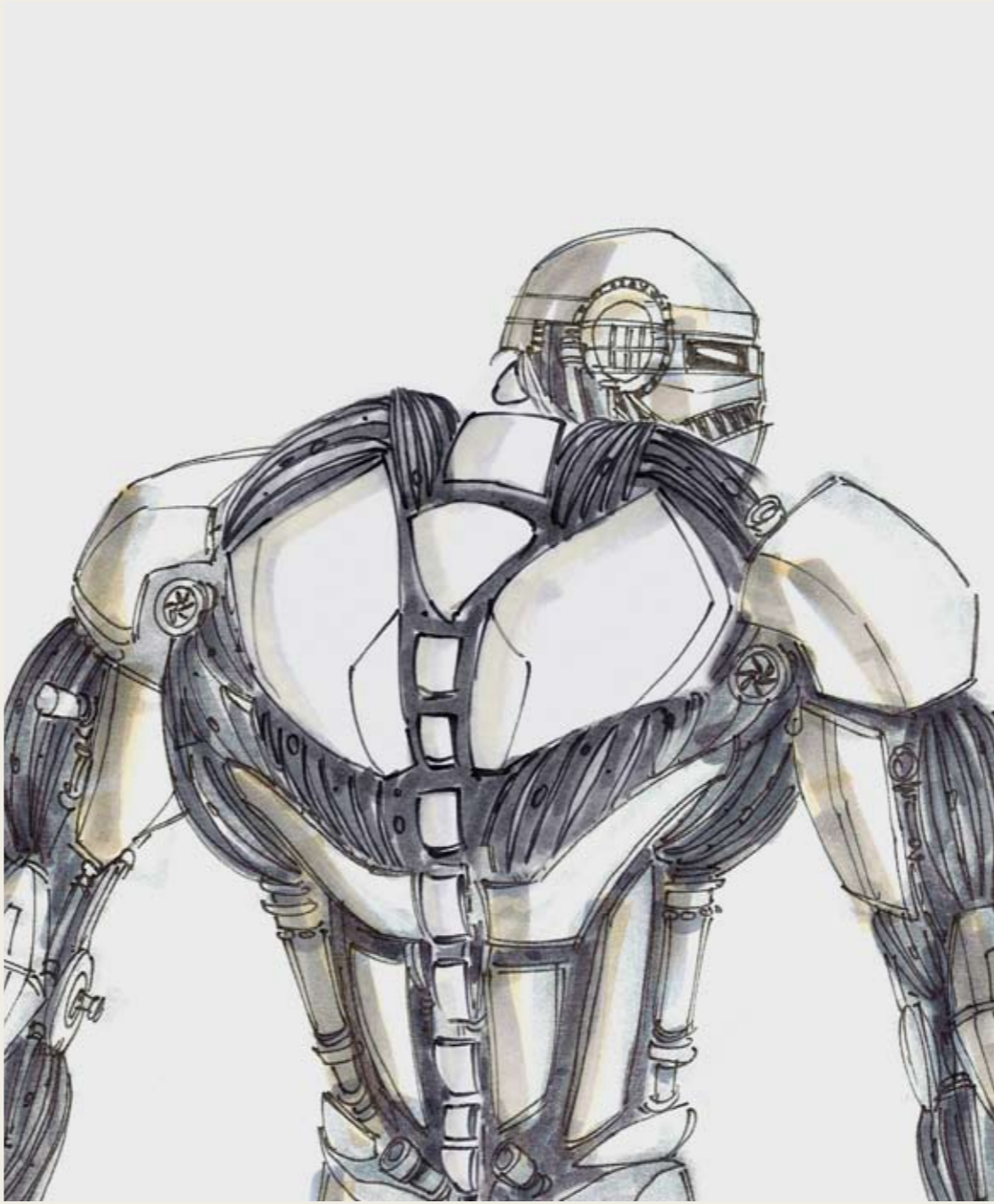
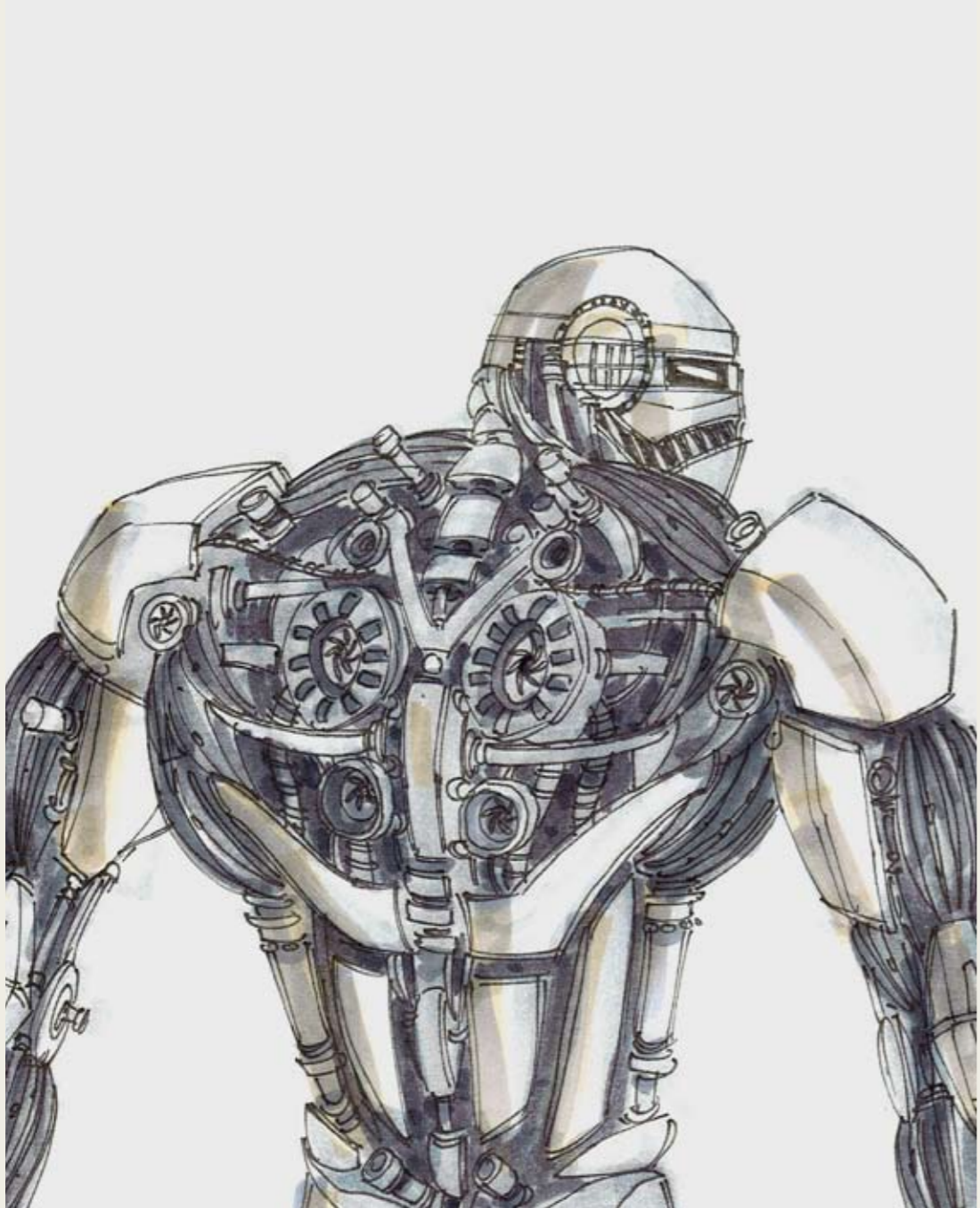


Giant Robot Bara Nui TurnAround



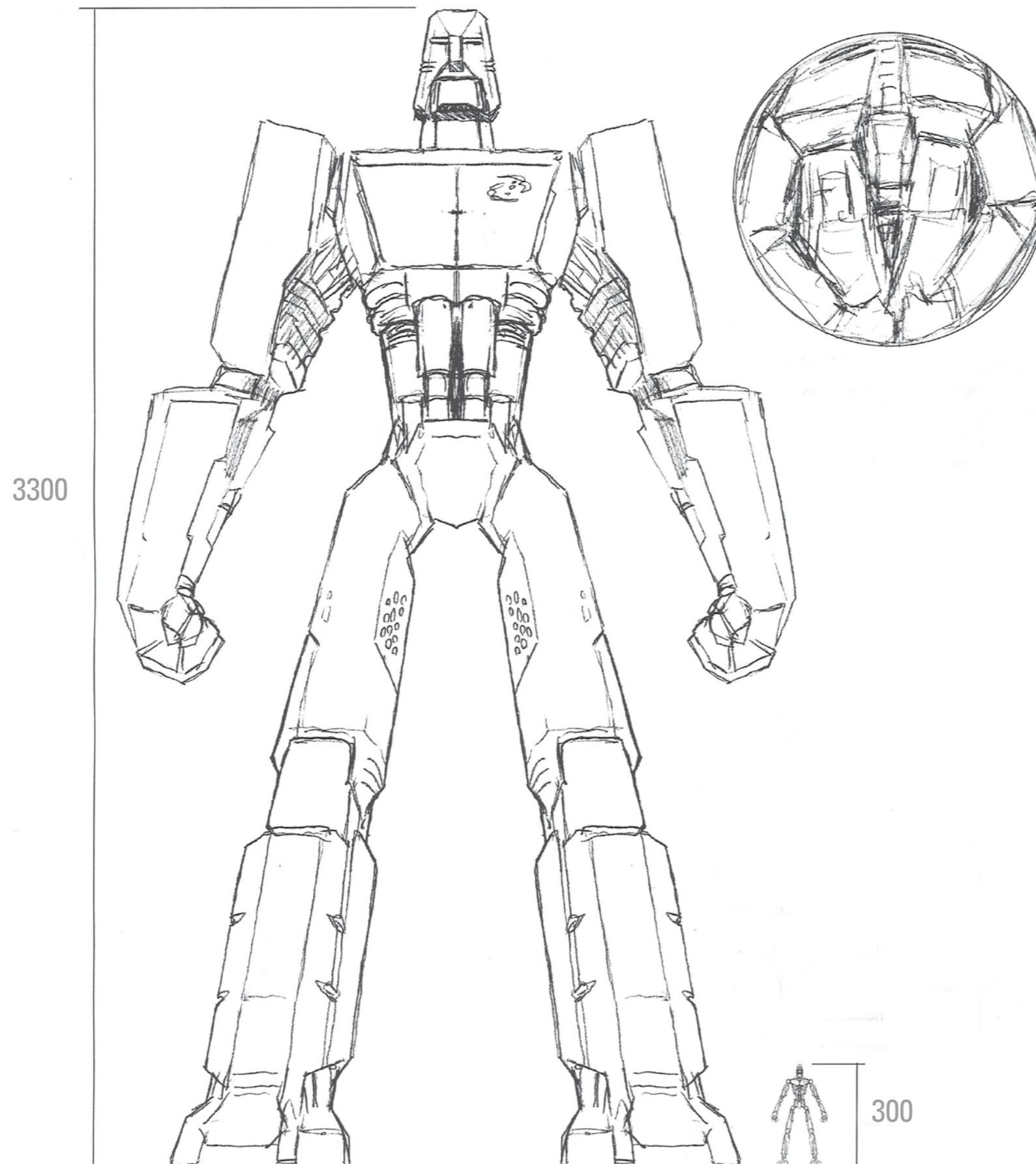
Giant Robot Last Generation Nano Fiber





Scarab Nano Fibers grows on the outside of skeleton

Giant Makuta Robot Size Comparison



Big Robot folded in spheric orbit mode

An idea for how these giant robots are intended to travel between planets. They could fold up to become a sphere. They unfold when they have impacted with a planet.

The Robot that MataNui starts to assemble on Bara Magna is only a 10th the size of the robot he lost to Makuta.

This insures a much more interesting fight between these giants in the final confrontation.



Giant Robot Bara Nui Concepts

